

preOp

A ready-to-drink, lemon flavoured carbohydrate drink for the preoperative dietary management of elective surgical patients

Features

- 0.5kcal/ml,
- Clear non-carbonated drink
- 12% complex carbohydrates
Low osmolality (iso-osmolar) = 260 mOsmol/kg H₂O
- Fat & Protein free
- Lemon flavour
- Available in 200ml
- Halaal certified

Indications

- For the preoperative dietary management of elective surgical patients

Precautions

- Use with caution in young children
- Use with caution in diabetic patients

Contraindications

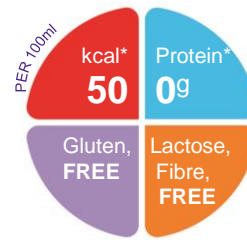
- Not for intravenous use
- Not suitable in patients with delayed gastric emptying
- Not suitable for use in emergency surgery

Age restrictions

- Not suitable for infants under 1 year of age

Important Notice

- Not suitable as a sole source of nutrition



Ordering Information

preOp	Presentation	Nappi Code	Units per carton
Lemon	200 ml bottle	721904801	4

Directions for Use

Stage (Morning list)	preOp (bottles)
Loading dose – evening before surgery	4
Final dose – 2 hours prior to anaesthesia	2
Stage (Afternoon list)	preOp (bottles)
Loading dose – the morning of surgery	4
Final dose – 2 hours prior to anaesthesia	2

- Usage to be determined by a healthcare professional
- preOp is best served chilled.
- Shake well before use.

Storage

- Store in a dry, cool place (5-25°C). Once opened store in a refrigerator
- for a maximum of 24 hours.

A food for special medical purposes; to be used under strict medical supervision.

Nutricia Southern Africa (PTY) Ltd
199 Bryanston Drive, Bryanston, 2191

For more information call the
Nutricia Customer Care Line 087 350 2310



Nutricia preOp

Nutrition Information		Per 100ml	Per 200ml
Energy	kcal	50	100
	kJ	213	426
Protein	g	Nil	Nil
Carbohydrate	g	12.6	25.2
Fat	g	Nil	Nil
Fibre	g	Nil	Nil
Sodium	mg	50.0	100

Other		Value
Osmolality	mOsmol/kg H ₂ O	260
Osmolarity	mOsmol/l	240
Potential Renal Solute Load	Kg/l	55
Density	pH	1.050
Viscosity	mPa.s	4.9

Minerals		Per 100ml	Per 200ml*
Sodium	mg	50.0	100
	mmol	2.2	4.4
Potassium	mg	122	244
	Mmol	3.1	6.2
Chloride	mg	6	12
Calcium	mg	6	12
Phosphorus	mg	0.60	1.2
Phosphate	Mg	1.84	3.68
Magnesium	mg	1	1
Ca/P ratio	mg	10	10

*Serve size: 200ml

Ingredients

preOp: Water, maltodextrin, fructose, tri potassium citrate, tri sodium citrate, acidity regulator (citric acid), flavour (lemon), sweetener (acesulfame K), sweetener (sodium saccharine).