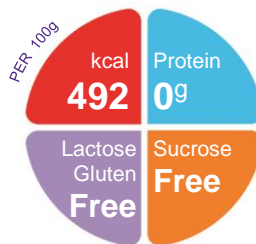


# Super Soluble Duocal

A high energy, low electrolyte, neutral tasting powder, consisting of a balanced blend of fat and carbohydrates

## Features

- 492 kcal per 100g
- 72.7g carbohydrates per 100g
- 22.3g fat per 100g
- 35% MCT
- Protein: nil added
- Phenylalanine, gluten, sucrose, fructose, lactose and milk protein free



## Ordering Information

SS Duocal	Nappi Code	Units per carton
400g can	709472001	6

## Indications

- For the dietary management of a wide range of conditions where a high energy, low fluid, low electrolyte diet is required such as
  - renal disease
  - liver disease
  - catabolic states.

## Precautions

- Use under medical supervision

## Contraindications

- Not for intravenous use

## Age restrictions

- Suitable for infants, children and adults

## Important Notice

- Not suitable as a sole source of nutrition

## Directions for Use

- Dosage is dependent on the age, bodyweight and medical condition of the patient
- Can be used to fortify a wide variety of drinks and foods, alternatively make into a paste
- For drinks and infant formula, mix required amount of Duocal with the dry formula and make as per instructions
- Once reconstituted, store in a refrigerator and discard prepared unused portions after 24 hours
- Usage to be determined by a healthcare professional

## Storage

- Store in a cool, dry place
- Replace lid firmly after use
- Once opened use contents within 1 month

A food for special medical purposes; must be used under strict medical supervision

Nutricia Southern Africa (PTY) Ltd  
199 Bryanston Drive, Bryanston, 2191

For more information call the  
Nutricia Customer Care Line 087 350 2310



# Super Soluble Duocal

Nutrition Information		Per 100g	Per scoop*
Energy	kcal	492	5.9
	kJ	2061	24.7
Protein	g	0	0
Carbohydrate	g	72.7	0.87
as sugars	g	6.5	0.07
Total Fat	g	22.3	0.26
Total fatty Acids	g	21.2	0.25
as saturates	g	8.4	0.1
monounsaturates	g	9.7	0.1
polyunsaturates	g	3.1	0.04
LCT	%	65	0.78
MCT	%	35	0.42
$\omega$ 6 / $\omega$ 3 ratio		4:1	
Fibre	g	0	0

\*Scoop size: 1.2g

## Ingredients

**Super Soluble Duocal:** Dried Glucose Syrup, Fractionated Coconut Oil, Hybrid, Safflower, Canola Oil, Emulsifier (E472(c)).

Minerals		Per 100g	Per scoop*
Sodium	mg	<20	
	mmol	<0.9	
Potassium	mg	<5	
	mmol	<0.1	
Calcium	mg	<5	
Phosphorus	mg	<5	
Magnesium	mg	<5	
Chloride	mg	<20	
Osmolality	mOsmol/ kg H <sub>2</sub> O	Ratio 1:4	196