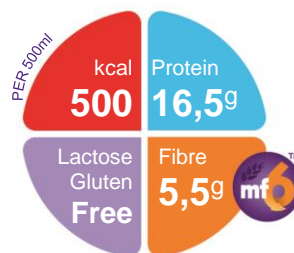


# NutriniMax Multi Fibre

A ready-to-use, nutritionally complete, normo-caloric, fibre enriched, paediatric tube feed for children 7-12 years (or 21-45kg)

## Features

- The only range of tube feeds designed to cater for the nutritional needs of older children
- 1 kcal/ml, 16.5g prot/500ml
- Whey protein enriched and dominant for improved tolerance and protein balance
- DHA\* and EPA\*\* enriched, blend of long chain fatty acids to support brain function and prevent deficiency – increased DHA 33.9g/100ml
- Fibre enriched, MF6 fibre blend\*\*\*, 5.5g per pack (500ml), to help maintain normal bowel function
- Enriched with carotenoids reflecting general health recommendations for its antioxidant properties and positive effect on immune function
- Halaal certified



## Indications

For the dietary management of:

- Disease related malnutrition in children 7-12 years (or 21-45kg)
  - Growth failure
  - Cardiac Disease & Critical Illness
  - PEG Feeding, Fluid Restriction
  - Neurological disorders
  - Burns, Cancer, Cerebral Palsy, Cystic Fibrosis & HIV
- Children with constipation or diarrhea

## Precautions

NutriniMax Multi Fibre is not suitable for the following:

- Patients with Galactosemia
- Patients with Cow's Milk allergy
- Patients requiring a fibre free diet

## Contraindications

- Gastrointestinal failure
- Complete intestinal failure
- Major intra-abdominal sepsis

## Age restrictions

- Not suitable for infants under 1 year of age

## Important Notice

- Use with caution in children with a seafood allergy
- Not for intravenous use

## Ordering Information

NutriniMax Multi Fibre	Nappi Code	Units per carton
500ml pack	712864001	8

## Directions for Use

- Use at room temperature
- Shake well before use
- Handle aseptically to ensure product remains sterile
- Usage to be determined by a healthcare professional

## Storage

- Store in a cool, dry place
- Once opened, store in the refrigerator
- Discard unused content after 24 hours

\* Docosahexaenoic acid (DHA)

\*\* Eicosapentaenoic acid (EPA)



\*\*\*MF6 is a unique, patented blend of six soluble and insoluble fibres (soy polysaccharide, cellulose, resistant starch, gum arabic, oligofructose and inulin) reflecting the proportions of the different fibre types in a healthy diet.

A food for special medical purposes; must be used under strict medical supervision

Nutrícia Southern Africa (PTY) Ltd  
199 Bryanston Drive, Bryanston, 2191

For more information call the  
Nutrícia Customer Care Line 087 350 2310

**NUTRICIA**  
Advanced Medical Nutrition

# NutriniMax Multi Fibre

Nutrition Information		Per 100ml	Per 500ml
Energy	kcal	100	500
	kJ	430	2150
Protein	g	3.3 (13%E)	16
	Casein	g	1.3
	Whey	g	1.9
Carbohydrate	g	13 (49%E)	65
	Sugars	g	0.8
	as Lactose	g	<0.025
Fat	g	4.2 (39%E)	21
	Saturates	g	0.5
	Monounsaturates	g	2.4
	Polyunsaturates	g	1.3
	DHA	mg	33.9
	EPA	g	0.0082
	ω6 / ω3 ratio		4:1
Fibre	g	1.1 (2.2%E)	5.5
	Soluble:Insoluble		056:057
Water	ml	84	420

Minerals		Per 100ml	Per 500ml
Sodium	mg	80	400
	mmol	3.5	17.5
Potassium	mg	138	690
	mmol	3.5	17.5
Calcium	mg	70	350
Phosphorus	mg	60	300
Magnesium	mg	17	85
Chloride	mg	110	550
Ca:P ratio		1.2:1	1.2:1

## Ingredients

**NutriniMax Multi Fibre:** Water, maltodextrin, vegetable oils (canola oil, sunflower oil), whey protein concentrate (from **milk**), dietary fibres (**soy** polysaccharides, resistant starch, inulin, arabic gum, cellulose, oligofructose), sodium caseinate (from **milk**), emulsifier (**soy** lecithin), acidity regulator (citric acid), di potassium hydrogen phosphate, **fish** oil, sodium chloride, tri calcium phosphate, tri potassium citrate, choline chloride, carotenoids (contains **soy**) (β-carotene, lutein, lycopene), potassium chloride, calcium hydroxide, magnesium hydroxide, sodium L-ascorbate, tri sodium citrate, potassium hydroxide, taurine, ferrous lactate, L-carnitine, zinc sulphate, nicotinamide, retinyl acetate, DL-α-tocopheryl acetate, sodium selenite, copper gluconate, manganese sulphate, calcium D-pantothenate, chromium chloride, D-biotin, cholecalciferol, thiamin hydrochloride, pyridoxine hydrochloride, pteroylmonoglutamic acid riboflavin, sodium molybdate, potassium iodide, sodium fluoride, cyanocobalamin, phytomenadione

Vitamins		Per 100ml	Per 500ml
Vitamin A	µg-RE	61	305
Vitamin D	µg	0.7	3.5
Vitamin E	mg-α-T.E.	1.3	6.5
Vitamin K	µg	4.5	22.5
Vitamin C	mg	10	50
Thiamin	mg	0.15	0.75
Riboflavin	mg	0.16	0.8
Niacin	mg NE	1.5	7.5
Vitamin B6	mg	0.15	0.75
Vitamin B12	µg	0.24	1.2
Folic Acid	µg	21	105
Pantothenic Acid	mg	0.43	2.2
Biotin	µg	4	20

Trace Elements		Per 100ml	Per 500ml
Iron	mg	1.3	6.5
Zinc	mg	1.1	5.5
Manganese	mg	0.24	1.2
Copper	µg	108	540
Iodine	µg	12	60
Molybdenum	µg	7	35
Selenium	µg	4.9	24.5
Chromium	µg	5.1	25.5
Fluoride	mg	0.09	0.45

Other		Per 100ml	Per 500ml
Carotenoids	mg	0.15	0.75
Choline	mg	28	140
Carnitine	mg	3	15
Taurine	mg	10	50
Osmolarity	mOsmol/l	230	230
Osmolality	mOsmol/kgH <sub>2</sub> O	275	275

