

# NutriniDrink Powder

A nutritionally complete, powder supplement that can be mixed to desired energy concentration

## Features

- Can be prepared to 1kcal/ml, 1.5kcal/ml or 2kcal/ml feed, flexibility to prepare to various energy concentrations
- 6.8g protein/200ml when made at standard dilution (1.5kcal/ml)
- Suitable as a sole source of nutrition or as a supplement to the diet for children aged 1-12 years
- Contains a higher percentage of fat, a lower percentage of protein and less iron compared to an adult supplement to cater specifically for the needs of children
- Available in vanilla flavour & neutral

## Indications

For the dietary management of:

- Disease related malnutrition in children
- Patients with higher energy and protein requirements
- Growth failure

## Precautions

NutriniDrink powder is not suitable for the following:

- Patients with galactosemia

## Contraindications

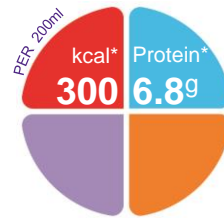
- Gastrointestinal failure
- Complete intestinal failure
- Major intra-abdominal sepsis

## Age restrictions

- Not suitable for infants under 1 year of age

## Important Notice

- Not for parenteral use



\*When made to 1.5kcal/ml dilution

## Ordering Information

NutriniDrink Powder	Presentation	Code	Units per carton
Vanilla	400g can	722949001	12
Neutral	400g can	722950001	12

## Directions for Use

- To prepare 100ml of feed at standard dilution (1.5kcal/ml) add 5 level scoops (30.4g) powder to 75ml water
- Stir briskly until dissolved
- Use prepared feed within 2 hours
- Always discard unused portion
- Usage to be determined by a healthcare professional
- Mixing guidelines (to make a final volume of 100ml):

Concentration	NutriniDrink Powder (g)	Water (ml)
1kcal/ml	20.3	83
1.5kcal/ml	30.4	75
2kcal/ml	40.6	67

## Storage

- Replace lid firmly after use
- Store in a cool, dry place
- Once can is opened, use contents within one month

A food for special medical purposes; to be used under strict medical supervision.

Nutricia Southern Africa (PTY) Ltd  
199 Bryanston Drive, Bryanston, 2191

For more information call the  
Nutricia Customer Care Line 087 350 2310



# NutriniDrink Powder

Nutrition Information		Per 100g	Per serve*
Energy	kcal	492	150
	kJ	2065	630
Protein	g	11.1 (9%E)	3.4
	Casein	g	11.1
Carbohydrate	g	61.3 (50%E)	18.6
	Sugars	g	14.6
	as Lactose	g	<0.10
Fat	g	22.6 (41%E)	6.9
	Saturates	g	5.7
	Monounsaturates	g	13.6
	Polyunsaturates	g	3.3
	$\omega 6 / \omega 3$ ratio		4.8:1
Fibre	g	0	0

Minerals		Per 100g	Per serve*
Sodium	mg	222	67
	mmol	9.7	2.9
Potassium	mg	493	150
	mmol	12.6	3.8
Calcium	mg	277	84
Phosphorus	mg	244	74
Magnesium	mg	51	16
Chloride	mg	333	101
Ca:P ratio		1.1:1	1.1:1

\*Serve size: 100ml when made up to 1.5kcal/ml

## Ingredients

**NutriniDrink Powder Vanilla:** Maltodextrin, vegetable oils (palm oil, sunflower oil, rapeseed oil), caseinate (from milk), sucrose, tri potassium citrate, sodium chloride, potassium di hydrogen phosphate, magnesium hydrogen phosphate, calcium carbonate, soy lecithin, vanilla flavour, choline chloride, sodium L-ascorbate, taurine, L-ascorbic acid, ferrous sulphate, zinc sulphate, L-carnitine, nicotinamide, D-biotin, manganese sulphate, calcium D-pantothenate, cupric sulphate, pteroylmonoglutamic acid, thiamin hydrochloride, riboflavin, pyridoxine hydrochloride, sodium fluoride, cyanocobalamin, retinyl palmitate, DL- $\alpha$  tocopheryl acetate, DL- $\alpha$ -tocopherol, cholecalciferol, chromium chloride, sodium molybdate, potassium iodide, sodium selenite, phytomenadione.

Vitamins		Per 100g	Per serve*
Vitamin A	$\mu\text{g-RE}$	225	68
Vitamin D	$\mu\text{g}$	5.4	1.7
Vitamin E	$\text{mg-}\alpha\text{-TE}$	6.5	2
Vitamin K	$\mu\text{g}$	22	6.6
Vitamin C	mg	58	17
Thiamin	mg	0.76	0.23
Riboflavin	mg	0.8	0.24
Niacin	mg NE	8.0	2.4
Vitamin B6	mg	0.6	0.18
Vitamin B12	$\mu\text{g}$	0.86	0.26
Folic Acid	$\mu\text{g}$	87	27
Pantothenic Acid	mg	1.7	0.5
Biotin	$\mu\text{g}$	17	5.2

Trace Elements		Per 100g	Per serve*
Iron	mg	4.9	1.5
Zinc	mg	5.0	1.5
Manganese	mg	0.75	0.23
Copper	$\mu\text{g}$	443	135
Iodine	$\mu\text{g}$	49	15
Molybdenum	$\mu\text{g}$	32	9.9
Selenium	$\mu\text{g}$	17	5.2
Chromium	$\mu\text{g}$	17	5.2
Fluoride	mg	0.32	0.1

Other		Per 100g	Per serve*
Choline	mg	99	30
Carnitine	mg	9.9	3
Taurine	mg	36	11
Osmolality	mOsmol/kg H <sub>2</sub> O	-	550