

Nutrini Peptisorb

A ready-to-use, semi-elemental, nutritionally complete, paediatric tube feed for children 1-6 years (or 8-20kg)

Features

- 71% short chain peptides and amino acids from hydrolysed whey protein for optimal protein absorption from the gut and minimal bowel residue¹
- 20% free amino acids, 51% short chain peptides, 29% long chain peptides
- 100% hydrolysed whey protein for improved tolerance²
- 50% of fat content from medium chain triglycerides (MCT) to enhance fat digestion and absorption in patients with malabsorption^{3,4}
- Higher proportion of fat, lower protein and iron content compared to adult formulations to cater for the needs of young children
- Enriched with carotenoids reflecting general health recommendations for its antioxidant properties and positive health benefits⁵
- Optimal osmolality (345 mOsm/kg H₂O) for better tolerance⁶
- Fibre free

Indications

For the dietary management of:

- Disease related malnutrition in combination with severe malabsorption and/or maldigestion in children 1-6 years (or 8-20kg)
- Wean from TPN to enteral feeds
- Chemotherapy induced gastro-enteritis

Precautions

Nutrini Peptisorb is not suitable for the following:

- Patients with Galactosemia

Contraindications

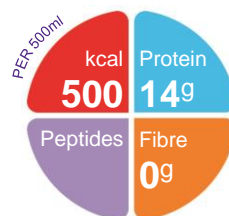
- Gastrointestinal failure
- Complete intestinal failure
- Major intra-abdominal sepsis

Age restrictions

- Not suitable for infants under 1 year of age
- Use with caution in children aged 7 years and older

Important Notice

- Not for intravenous use



Ordering Information

| Nutrini Peptisorb | Nappi Code | Units per carton |
|-------------------|------------|------------------|
| 500ml pack | 715364001 | 8 |

Directions for Use

- Use at room temperature
- Shake well before use
- Handle aseptically to ensure product remains sterile
- Usage to be determined by a healthcare professional
- Aseptically handled pack has a hanging time of maximum 24 hours once opened.

Storage

- Store in a cool, dry place

1. Grimble GK et al. Clin Sci 1986; 71:65-69.
2. Fried MD et al. J Pediatr 1992; 120 (4 pt 1): 569-572.
3. Faber J et al. J Pediatr Gastroenterol Nutr 1988; 7:189-195.
4. Goulet O et al. J Pediatr Gastroenterol Nutr 2004; 38:250-269.
5. Vaisman N et al. Clin Nutr 2006; 25:897-905.
6. GOSH for Children NHS Trust. Nutritional requirements for Children in health and disease. Third edition. September 2000.

A food for special medical purposes; must be used under strict medical supervision

Nutricia Southern Africa (PTY) Ltd
199 Bryanston Drive, Bryanston, 2191

For more information call the
Nutricia Customer Care Line 087 350 2310



Nutrini Peptisorb

| Nutrition Information | | Per 100ml | Per 500ml |
|-----------------------------|------|----------------|-----------|
| Energy | kcal | 100 | 500 |
| | kJ | 420 | 2100 |
| Protein | g | 2.8 (11%E) | 14 |
| Casein | g | 0 | 0 |
| Whey | g | 2.7 | 13.5 |
| Carbohydrate | g | 13.7 (54%E) | 68.5 |
| Sugars | g | 0.8 | 4 |
| as Lactose | g | 0.1 | 0.5 |
| Fat | g | 3.9 (35%E) | 19.5 |
| Saturates | g | 2.2 | 11 |
| of which MCT | g | 1.8 | 9 |
| Monounsaturates | g | 0.5 | 2.5 |
| Polyunsaturates | g | 1.2 | 6 |
| $\omega 6 / \omega 3$ ratio | | 11:1 | 11:1 |
| Fibre | g | 0 | 0 |
| Water | ml | 85 | 425 |

| Minerals | | Per 100ml | Per 500ml |
|------------|------|-----------|-----------|
| Sodium | mg | 60 | 300 |
| | mmol | 2.6 | 13 |
| Potassium | mg | 110 | 550 |
| | mmol | 2.8 | 14 |
| Calcium | mg | 60 | 300 |
| Phosphorus | mg | 50 | 250 |
| Magnesium | mg | 11 | 55 |
| Chloride | mg | 95 | 475 |
| Ca:P ratio | | 1.2:1 | 1.2:1 |

Ingredients

Nutrini Peptisorb: Demineralised water, maltodextrin, whey protein hydrolysate (from **milk**), vegetable oils (MCT oil, **soy** oil), starch (corn), acidity regulator (citric acid), calcium hydrogen phosphate, tri potassium citrate, sodium chloride, potassium chloride, potassium di hydrogen phosphate, choline chloride, sodium L-ascorbate, carotenoids (contains **soy**) (β -carotene, lycopene, lutein), magnesium hydrogen phosphate, taurine, ferrous lactate, DL- α tocopheryl acetate, zinc sulphate, L-carnitine, nicotinamide, retinyl acetate, copper gluconate, D-biotin, cholecalciferol, manganese sulphate, calcium D-pantothenate, sodium selenite, thiamin hydrochloride, chromium chloride, pyridoxine hydrochloride, riboflavin, pteroylmonoglutamic acid, sodium fluoride, potassium iodide, phytomenadione, cyanocobalamin

| Vitamins | | Per 100ml | Per 500ml |
|------------------|--------------------------------|-----------|-----------|
| Vitamin A | $\mu\text{g-RE}$ | 41 | 205 |
| Vitamin D | μg | 1 | 5 |
| Vitamin E | $\text{mg-}\alpha\text{-T.E.}$ | 1.3 | 6.5 |
| Vitamin K | μg | 4 | 20 |
| Vitamin C | mg | 10 | 50 |
| Thiamin | mg | 0.15 | 0.75 |
| Riboflavin | mg | 0.16 | 0.8 |
| Niacin | mg NE | 1.1 | 5.5 |
| Vitamin B6 | mg | 0.12 | 0.6 |
| Vitamin B12 | μg | 0.17 | 0.85 |
| Folic Acid | μg | 15 | 75 |
| Pantothenic Acid | mg | 0.33 | 1.65 |
| Biotin | μg | 4 | 20 |

| Trace Elements | | Per 100ml | Per 500ml |
|----------------|---------------|-----------|-----------|
| Iron | mg | 1 | 5 |
| Zinc | mg | 1 | 5 |
| Manganese | mg | 0.15 | 0.75 |
| Copper | μg | 90 | 450 |
| Iodine | μg | 10 | 50 |
| Molybdenum | μg | 4 | 20 |
| Selenium | μg | 3 | 15 |
| Chromium | μg | 3.5 | 17.5 |
| Fluoride | mg | 0.07 | 0.35 |



| Other | | Per 100ml | Per 500ml |
|-------------|---------------------------|-----------|-----------|
| Carotenoids | mg | 0.1 | 0.5 |
| Choline | mg | 20 | 100 |
| L-Carnitine | mg | 2 | 10 |
| Taurine | mg | 8 | 40 |
| Osmolarity | mOsmol/l | 295 | 295 |
| Osmolality | mOsmol/kgH ₂ O | 345 | 345 |