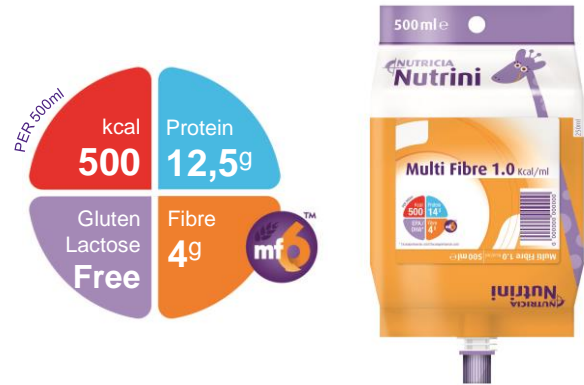


# Nutrini Multi Fibre

A ready-to-use, nutritionally complete, normo-caloric, fibre enriched, paediatric tube feed for children 1-6 years (or 8-20kg)

## Features

- 1 kcal/ml & 12,5g prot/500ml
- Whey protein enriched and dominant for improved tolerance and protein balance
- Higher proportion of fat, lower protein and iron content compared to adult formulations to cater for the needs of young children
- Increased DHA -35,6mg/100ml
- DHA\* dominant blend of long chain fatty acids to support brain function and prevent deficiency
- Fibre enriched, MF6 fibre blend\*\*\*, 4g per pack (500ml), to help maintain normal bowel function
- Halaal certified



## Indications

For the dietary management of:

- Disease related malnutrition in children 1-6 years (or 8-20kg)
  - Growth failure
  - Cardiac Disease & Critical Illness
  - PEG Feeding, Fluid Restriction
  - Neurological disorders
  - Burns, Cancer, Cerebral Palsy, Cystic Fibrosis & HIV

## Precautions

Nutrini Multi Fibre is not suitable for the following:

- Patients with Galactosemia
- Patients with Cow's Milk Allergy
- Patients requiring a fibre free diet

## Contraindications

- Gastrointestinal failure
- Complete intestinal failure
- Major intra-abdominal sepsis

## Age restrictions

- Not suitable for infants under 1 year of age
- Use with caution in children aged 7 years and older

## Important Notice

- Use with caution in children with a seafood allergy
- Not for intravenous use

## Ordering Information

Nutrini Multi Fibre	Nappi Code	Units per carton
500 ml pack	715366001	8

## Directions for Use

- Use at room temperature
- Shake well before use
- Handle aseptically to ensure product remains sterile
- Usage to be determined by a healthcare professional

## Storage

- Store in a cool, dry place
- Once opened, store in the refrigerator
- Discard unused content after 12 hours



\*\*\*MF6 is a unique, patented blend of six soluble and insoluble fibres (soy polysaccharide, cellulose, resistant starch, gum arabic, oligofructose and inulin) reflecting the proportions of the different fibre types in a healthy diet.

\* Docosahexaenoic acid (DHA)  
\*\* Eicosapentaenoic acid (EPA)

A food for special medical purposes; to be used under strict medical supervision.

Nutrícia Southern Africa (PTY) Ltd  
199 Bryanston Drive, Bryanston, 2191

For more information call the  
Nutrícia Customer Care Line 087 350 2310

**NUTRICIA**  
Advanced Medical Nutrition

# Nutrini Multi Fibre

Nutrition Information		Per 100ml	Per 500ml	
Energy	kcal	100	500	
	kJ	425	2125	
Protein	g	2.5 (10%E)	12.5	
	Casein	g	1	5
	Whey	g	1.5	7.5
Carbohydrate	g	12.5 (49%E)	60	
	Sugars	g	0.8	4
	as Lactose	g	<0.025	<0.125
Fat	g	4.4 (39.5%E)	22	
	Saturates	g	0.5	2
	Monounsaturates	g	2.6	13
	Polyunsaturates	g	1.3	6.5
	DHA	g	0.0355	0.1775
	EPA	g	0.0086	0.043
	ω6 / ω3 ratio		4:1	4:1
Fibre	g	0.8 (1.5%E)	4	
	Soluble:Insoluble		50:50	50:50
Water	ml	85	425	

Minerals		Per 100ml	Per 500ml
Sodium	mg	60	300
	mmol	2.6	13
Potassium	mg	110	550
	mmol	2.8	14
Calcium	mg	60	300
Phosphorus	mg	50	250
Magnesium	mg	11	55
Chloride	mg	95	475
Ca:P ratio		1.2:1	1.2:1

## Ingredients

**Nutrini Multi Fibre:** Water, maltodextrin, vegetable oils (canola oil, sunflower oil), whey protein concentrate (from **milk**), sodium caseinate (from **milk**), dietary fibres (**soy** polysaccharides, resistant starch, inulin, arabic gum, cellulose, oligofructose), emulsifier (**soy** lecithin), **fish** oil, acidity regulator (citric acid), di potassium hydrogen phosphate, sodium chloride, tri calcium phosphate, potassium chloride, tri potassium citrate, calcium hydroxide, sodium L-ascorbate, choline chloride, carotenoids (contains **soy**) (β-carotene, lutein, lycopene), magnesium hydroxide, potassium hydroxide, taurine, ferrous lactate, zinc sulphate, L-carnitine, nicotinamide, DL-α-tocopheryl acetate, retinyl acetate, copper gluconate, sodium selenite, cholecalciferol, manganese sulphate, D-biotin, calcium D-pantothenate, thiamin hydrochloride, chromium chloride, riboflavin, pyridoxine hydrochloride, pteroylmonoglutamic acid, potassium iodide, sodium flouride, sodium molybdate, phytomenadione, cyanocobalamin.

Vitamins		Per 100ml	Per 500ml
Vitamin A	µg-RE	41	205
Vitamin D	µg	1	5
Vitamin E	mg-α-T.E.	1.3	6.5
Vitamin K	µg	4	20
Vitamin C	mg	10	50
Thiamin	mg	0.15	0.75
Riboflavin	mg	0.16	0.8
Niacin	mg NE	1.1	5.5
Vitamin B6	mg	0.12	0.6
Vitamin B12	µg	0.25	1.25
Folic Acid	µg	15	75
Pantothenic Acid	mg	0.33	1.65
Biotin	µg	4	20

Trace Elements		Per 100ml	Per 500ml
Iron	mg	1	5
Zinc	mg	1	5
Manganese	mg	0.15	0.75
Copper	µg	81	405
Iodine	µg	10	50
Molybdenum	µg	4	20
Selenium	µg	3	15
Chromium	µg	3.5	17.5
Fluoride	mg	0.07	0.35



Other		Per 100ml	Per 500ml
Carotenoids	mg	0.1	0.5
Choline	mg	20	100
Carnitine	mg	2	10
Taurine	mg	7.5	37.5
Osmolarity	mOsmol/l	260	260
Osmolality	mOsmol/kgH <sub>2</sub> O	310	310