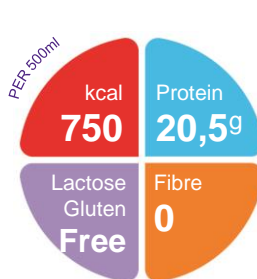


# Nutrini Energy

A ready-to-use, nutritionally complete, high energy, paediatric tube feed without fibre for children 1-6 years (or 8-20kg)

## Features

- 1.5 kcal/ml
- 20.5g protein per 500ml
- Whey protein enriched for improved tolerance and protein balance
- Higher proportion of fat, lower protein and iron content compared to adult formulations to cater for the needs of young children
- DHA\* and EPA\*\* enriched, blend of long chain fatty acids to support brain function and prevent deficiency; DHA – 53.4mg/100ml
- Fibre free
- Halaal certified



## Indications

For the dietary management of:

- Disease related malnutrition in children 1-6 years (or 8-20kg)
  - Growth failure & children requiring a fibre free diet
  - Cardiac Disease & Critical Illness
  - PEG Feeding, Fluid Restriction
  - Neurological disorders
  - Burns, Cancer, Cerebral Palsy, Cystic Fibrosis & HIV

## Precautions

Nutrini Energy is not suitable for the following:

- Patients with Galactosemia
- Patients with Cow's Milk Allergy

## Contraindications

- Gastrointestinal failure
- Complete intestinal failure
- Major intra-abdominal sepsis

## Age restrictions

- Not suitable for infants under 1 year of age
- Use with caution in children aged 7 years and older

## Important Notice

- Use with caution in children with a seafood allergy
- Not for intravenous use

## Ordering Information

Nutrini Energy	Nappi Code	Units per carton
500 ml pack	715365001	8

## Directions for Use

- Use at room temperature
- Shake well before use
- Handle aseptically to ensure product remains sterile
- Usage to be determined by a healthcare professional

## Storage

- Store in a cool, dry place
- Once opened, store in the refrigerator
- Discard unused content after 24 hours

\* Docosahexaenoic acid (DHA)

\*\* Eicosapentaenoic acid (EPA)

A food for special medical purposes; to be used under strict medical supervision.

Nutricia Southern Africa (PTY) Ltd  
199 Bryanston Drive, Bryanston, 2191

For more information call the  
Nutricia Customer Care Line 087 350 2310

 **NUTRICIA**  
Advanced Medical Nutrition

# Nutrini Energy

Nutrition Information		Per 100ml	Per 500ml	
Energy	kcal	150	750	
	kJ	630	3150	
Protein	g	4.1 (11%E)	20.5	
	Casein	g	2.5	12.5
	Whey	g	1.6	8
Carbohydrate	g	18.5 (49%E)	92.5	
	Sugars	g	1.1	5.5
	as Lactose	g	<0.025	<0.125
Fat	g	6.7 (40%E)	33.5	
	Saturates	g	0.8	4
	Monounsaturates	g	3.9	19.5
	Polyunsaturates	g	2	10
	DHA	mg	53.1	265.5
	EPA	mg	12.8	63
	ω6 / ω3 ratio	4:1	-	
Fibre	g	0	0	
Water	ml	78	390	

Minerals		Per 100ml	Per 500ml
Sodium	mg	90	450
	mmol	3.9	19.5
Potassium	mg	165	825
	mmol	4.2	21
Calcium	mg	90	450
Phosphorus	mg	75	375
Magnesium	mg	17	85
Chloride	mg	143	715
Ca:P ratio		1.2:1	1.2:1

## Ingredients

**Nutrini Energy:** Water, maltodextrin, vegetable oils (canola oil, sunflower oil), sodium caseinate (from **milk**), whey protein concentrate (from **milk**) emulsifier (**soy** lecithin), **fish** oil, acidity regulator (citric acid), tri calcium phosphate, potassium chloride, di potassium hydrogen phosphate, sodium chloride, calcium hydroxide, tri potassium citrate, choline chloride, carotenoids (contains **soy**) (β-carotene, lutein, lycopene), sodium L-ascorbate, magnesium hydroxide, calcium hydroxide, potassium hydroxide, taurine, ferrous lactate, zinc sulphate, L-carnitine, nicotinamide, DL-α-tocopheryl acetate, retinyl acetate, copper gluconate, sodium selenite, cholecalciferol, manganese sulphate, D-biotin, calcium D-pantothenate, thiamin hydrochloride, chromium chloride, riboflavin, pyridoxine hydrochloride, pteroylmonoglutamic acid, potassium iodide, sodium fluoride, sodium molybdate, phytonadione, cyanocobalamin.

Vitamins		Per 100ml	Per 500ml
Vitamin A	µg-RE	61	305
Vitamin D	µg	1.5	7.5
Vitamin E	mg-α-T.E.	1.9	9.5
Vitamin K	µg	6	30
Vitamin C	mg	15	75
Thiamin	mg	0.23	1.2
Riboflavin	mg	0.24	1.2
Niacin	mg NE	1.7	8.5
Vitamin B6	mg	0.18	0.9
Vitamin B12	µg	0.27	1.4
Folic Acid	µg	23	115
Pantothenic Acid	mg	0.5	2.5
Biotin	µg	6	30

Trace Elements		Per 100ml	Per 500ml
Iron	mg	1.5	7.5
Zinc	mg	1.5	7.5
Manganese	mg	0.23	1.15
Copper	µg	122	610
Iodine	µg	15	75
Molybdenum	µg	6	30
Selenium	µg	4.5	22.5
Chromium	µg	5.3	26.5
Fluoride	mg	0.11	0.55



Other		Per 100ml	Per 500ml
Carotenoids	mg	0.15	0.75
Choline	mg	30	150
Carnitine	mg	3	15
Taurine	mg	11.3	56.5
Osmolarity	mOsmol/l	300	300
Osmolality	mOsmol/kgH <sub>2</sub> O	390	390