

NutriniDrink Multi Fibre

Nutritionally complete high energy oral supplement with fibre
(1-12 years)

Features

- 1.5kcal/ml
- 6.6g protein/200ml drink
- Fibre enriched, MF6 fibre blend*, 4.6g per bottle, to help maintain normal bowel function
- Contains carotenoids
- Contains a higher percentage of fat, a lower percentage of protein and less iron compared to an adult supplement to cater specifically for the needs of children
- Available in Vanilla and Strawberry
- User friendly, easy to hold plastic bottle with straw attached and resealable cap
- Halaal certified

Indications

For the dietary management of:

- Disease related malnutrition in children
- Patients with higher energy and protein requirements, such as:
 - Cystic Fibrosis
 - Cerebral Palsy
 - Failure to thrive/faltering growth
 - Cardiac disease
 - Burns
 - Cancer
 - HIV/AIDS

Precautions

NutriniDrink Multi Fibre is not suitable for the following:

- Patients with Galactosemia
- Patients with Cow's Milk Allergy
- Patients requiring a fibre free diet

Contraindications

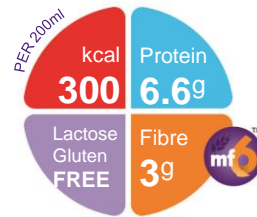
- Gastrointestinal failure
- Complete intestinal failure
- Major intra-abdominal sepsis

Age restrictions

- Not suitable for infants under 1 year of age

Important Notice

- Not suitable for intravenous use



Ordering Information

NutriniDrink Multi Fibre	Presentation	Nappi Code	Units per carton
Vanilla	200ml bottle	712862001	24
Strawberry	200ml bottle	715363001	24

Directions for Use

- Best served chilled
- Shake well before use
- Usage to be determined by a healthcare professional

Storage

- Store in a cool, dry place
- Once opened, store in the refrigerator
- Discard unused content after 24 hours



*MF6 is a unique, patented blend of six soluble and insoluble fibres (soy polysaccharide, cellulose, resistant starch, gum arabic, oligofructose and inulin) reflecting the proportions of the different fibre types in a healthy diet.

A food for special medical purposes; to be used under strict medical supervision.

Nutricia Southern Africa (PTY) Ltd
199 Bryanston Drive, Bryanston, 2191

For more information call the Nutricia Customer Care Line on 087 350 2310

NUTRICIA
Advanced Medical Nutrition

NutriniDrink Multi Fibre

Nutrition Information		Per 100ml	Per 200ml
Energy	kcal	150	300
Protein	g	3.3 (9%E)	6.6
Casein	g	3.3	6.6
CHO	g	18.8 (50%E)	37.6
Sugars	g	7.4	14.8
as Lactose	g	<0.025	<0.05
Fat	g	6.8 (41%E)	13.6
Saturates	g	0.7	1.4
Monounsaturates	g	4.1	8.2
Polyunsaturates	g	2.0	4.0
ω6 / ω3 ratio	g	5.1:1	5.1:1
Fibre	g	1.5	3
Soluble		0.9	1.8
Insoluble		0.6	1.2

Minerals		Per 100ml	Per 200ml
Sodium	mg	67	134
	mmol	2.9	5.8
Potassium	mg	140	280
	mmol	3.6	7.2
Calcium	mg	84	168
Phosphorus	mg	75	150
Magnesium	mg	17	34
Chloride	mg	100	200
Ca:P ratio		1.1:1	1.1:1

Ingredients

NutriniDrink Multi Fibre Vanilla: Water, maltodextrin, **milk** proteins (sodium caseinate), sugar, vegetable oils (rape seed oil, sunflower oil), dietary fibres (**soy** polysaccharides, inulin, oligofructose, resistant starch, arabic gum, cellulose), potassium citrate, emulsifier (**soy** lecithin), flavour (vanilla), magnesium chloride, acidity regulator (citric acid), tri calcium phosphate, carotenoids ((contains **soy** lecithin) β-carotene, lutein, lycopene), choline chloride, calcium hydroxide, potassium hydroxide, sodium L- ascorbate, ferrous lactate, zinc sulphate, colour (curcumin), magnesium hydroxide, nicotinamide, retinyl acetate, copper gluconate, DL-α tocopheryl acetate, sodium selenite, manganese sulphate, calcium D-pantothenate, chromium chloride, D-biotin, cholecalciferol, thiamin hydrochloride, pteolymonoglutamic acid, pyridoxine hydrochloride, cyanocobalamin, sodium molybdate, riboflavin, sodium fluoride, potassium iodide, phytomenadione.

NutriniDrink Multi Fibre Strawberry: Water, maltodextrin, **milk** proteins (sodium caseinate), sugar, vegetable oils (rape seed oil, sunflower oil), dietary fibres (**soy** polysaccharides, inulin, oligofructose, resistant starch, arabic gum, cellulose), potassium citrate, emulsifier (**soy** lecithin), flavour (strawberry), magnesium chloride, acidity regulator (citric acid), tri calcium phosphate, carotenoids ((contains **soy** lecithin) β-carotene, lutein, lycopene), choline chloride, calcium hydroxide, potassium hydroxide, sodium L- ascorbate, ferrous lactate, zinc sulphate, colour (curcumin), magnesium hydroxide, nicotinamide, retinyl acetate, copper gluconate, DL-α tocopheryl acetate, sodium selenite, manganese sulphate, calcium D-pantothenate, chromium chloride, D-biotin, cholecalciferol, thiamin hydrochloride, pteolymonoglutamic acid, pyridoxine hydrochloride, cyanocobalamin, sodium molybdate, riboflavin, sodium fluoride, potassium iodide, phytomenadione

Vitamins		Per 100ml	Per 200ml
Vitamin A	µg-RE	61	102
Vitamin D	µg	1.5	3
Vitamin E	mg-α-TE	1.9	3.8
Vitamin K	µg	6.0	12
Vitamin C	mg	15	30
Thiamin	mg	0.23	0.46
Riboflavin	mg	0.24	0.48
Niacin	mg NE	1.7	3.4
Vitamin B6	mg	0.18	0.36
Vitamin B12	µg	0.26	0.52
Folic Acid	µg	23	46
Pantothenic Acid	mg	0.5	1
Biotin	µg	6.0	12

Trace Elements		Per 100ml	Per 200ml
Iron	mg	1.5	3
Zinc	mg	1.5	3
Manganese	mg	0.23	0.46
Copper	µg	135	270
Iodine	µg	15	30
Molybdenum	µg	6.0	12
Selenium	µg	4.5	9
Chromium	µg	5.3	10.6
Fluoride	mg	0.11	0.22



Other		Per 100ml	Per 200ml
Carotenoids	mg	0.15	0.30
L-Carnitine	mg	0.3	0.3
Choline	mg	30	60
Taurine	mg	11	22
Osmolarity	mOsmol/l		440
Osmolality	mOsmol/kg H ₂ O		570
PRSL	mOsmol/l		306