

Nutlis Powder

A food and fluid thickener with amylase resistant features for the dietary management of dysphagia

Features

- Amylase resistant formulation ensures food/drink maintains consistency after contact with saliva for a safer swallow
- Mixes in both hot and cold foods and fluids
- Thickened food or fluid can be heated, cooled or frozen whilst maintaining its consistency
- >97% fluid release for absorption
- Does not change the taste of food or fluid
- Can be added to Nutricia's liquid supplements to reach the required level of thickness
- Lactose free
- Protein is a vegetable source and therefore suitable for patients with cow's milk allergies
- Statement on absence of pork available

Indications

For the dietary management of:

- Disease related malnutrition
- Patients with swallowing difficulties (dysphagia)

Precautions

- Use under medical supervision
- Only suitable as a food and fluid thickener

Contraindications

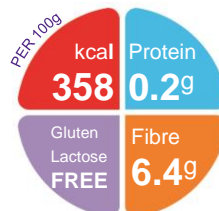
- Not for tube or intravenous use

Age restrictions

- Not suitable for infants and children under the age of 3 years

Important Notice

- Not suitable as a sole source of nutrition



Ordering Information

Nutlis	Nappi Code	Units per Carton
300 gram	tin 708459001	12

Directions for Use

- Handle aseptically to ensure product remains sterile
- Add the prescribed amount of Nutlis to liquid or pureed meals
- Use a fork, whisk or shaker to mix vigorously for approximately 10-20 seconds until all the powder is dissolved
- Leave to stand 5-10 minutes to achieve the required consistency
- Do not add additional Nutlis or stir during standing time
- Discard unused prepared portion after 2 hours
- Quantity used to be determined by a healthcare professional

Storage

- Store in a cool, dry place
- Replace lid firmly after use
- Discard unused content after a maximum of 8 weeks
- Do not refrigerate

A food for special medical purposes; to be used under strict medical supervision.

Nutricia Southern Africa (PTY) Ltd
199 Bryanston Drive, Bryanston, 2191

For more information call the
Nutricia Customer Care Line 087 350 2310



Nutilis Powder

Nutrition Information		Per 100g	Per scoop*
Energy	kcal	363	14.5
	kJ	1545	61.8
Protein	g	0.26	0.01
Carbohydrate	g	87.5	3.5
Sugars	g	1.5	0.06
Glucose	g	0.5	0.02
Lactose	g	<0.06	<0.002
Maltose	g	1.0	0.04
polysaccharides	g	86.0	3.44
Fat	g	0.1	0.004
Fibre	g	5.8	0.23
Soluble	g	4.9	0.19
Insoluble	g	0.9	0.03
Water	g	≤ 8	≤ 0.3

*Scoop size: 4g

Minerals		Per 100g	Per scoop*
Sodium	mg	<91.0	<3.64
Potassium	mg	<75.0	<3.0
Chloride	mg	<35.0	<1.4
Calcium	mg	<21	<0.84
Phosphorous	mg	<17.0	<0.68
Magnesium	mg	<3.5	<0.14

Ingredients

Nutilis Powder: Maltodextrin, thickeners (modified starch (maize), tara gum, xanthan gum, guar gum)