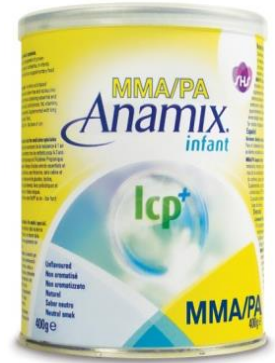
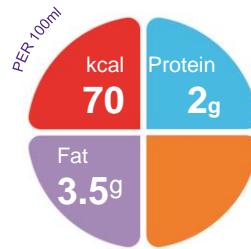


MMA/PA Anamix Infant

An amino based methionine, threonine and valine-free, low isoleucine powdered formula, supplemented with long chain polyunsaturated fatty acids (LCPs) and prebiotics

Features

- 0.7kcal/ml (15% w/v concentration)
- 2g protein equivalent per 100ml (15% w/v)
- Contains LCPs to help support brain and visual development
- Contains prebiotics to help support infants' natural immune system
- Contains other essential and non-essential amino acids, carbohydrate, fat, vitamins, minerals and trace elements
- Unflavoured



Indications

- For the dietary management of proven methylmalonic or propionic acidaemia

Precautions

- Only intended for use by patients with proven methylmalonic or propionic acidaemia
- Use under strict medical supervision

Contraindications

- Not for intravenous use

Age restrictions

- Suitable for infants from birth to 12 months of age
- Can be used as a supplementary feed for children 1 to 3 years of age

Important Notice

- This product must be given in conjunction with a source of protein e.g. breast milk or proprietary infant formula to supply the methionine, threonine, valine, isoleucine, fluid and general nutrition requirements of the infant in quantities as prescribed by a clinician or dietitian
- Not suitable for use as a sole source of nutrition

Ordering Information

MMA/PA Anamix Infant	Presentation	Code	Units per carton
Unflavoured	400g tin	709479001	3

Directions for Use

- The quantity of feed should be determined by a clinician or dietitian only and is dependent on the age, bodyweight and medical condition of the patient
- Follow preparation instructions as stated on the can
- Each level scoop (5g) of MMA/PA Anamix Infant requires 30ml of water to yield the recommended feed concentration (15% w/v).
- A lower concentration may initially be required until recommended concentration is tolerated

Storage

- Store can in a cool, dry place
- Always replace the container lid after use
- Once can is opened, use within two weeks
- Unopened shelf life is 18 months

A food for special medical purposes; to be used under strict medical supervision.

Nutricia Southern Africa (PTY) Ltd
199 Bryanston Drive, Bryanston, 2191

For more information call the
Nutricia Customer Care Line 087 350 2310

 **NUTRICIA**
Advanced Medical Nutrition

MMA/PA Anamix Infant

Nutrition Information		Per 100g	Per 100ml*
Energy	kcal	466	70
	kJ	1950	293
Protein equivalent	g	13.1	2
Carbohydrate	g	49.8	7.5
Sugars	g	7.3	1.1
as Lactose	g	1.6	0.24
Fat	g	23	3.5
Saturates	g	7.5	1.1
Monounsaturates	g	9.4	1.4
Polyunsaturates	g	5	0.75
AA	g	0.14	0.02
DHA	g	0.07	0.01
ω6 / ω3 ratio		5.9:1	
Fibre	g	5.3	0.8

Minerals		Per 100g	Per 100ml*
Sodium	mg	191	28.7
	mmol	8.3	1.2
Potassium	mg	501	75.2
	mmol	12.8	1.9
Calcium	mg	410	61.5
Phosphorus	mg	300	45
Magnesium	mg	58	8.7
Chloride	mg	355	53.3
Ca:P ratio		1.4:1	

*When prepared at recommended concentration 15% w/v (i.e. 15g powder made up to 100ml with water)

Scoop size: 5g

Ingredients:

MMA/PA Anamix Infant: dried glucose syrup, refined vegetable oil (high oleic sunflower, soya, non-hydrogenated coconut, canola, sunflower), dietary fibres (galacto-oligosaccharides (from milk), polyfructose), L-lysine L-glutamate, L-leucine, lactose (from milk), L-alanine, glucose (from milk), L-arginine, L-aspartic acid, L-histidine, emulsifier (E472c), L-phenylalanine, L-tyrosine, calcium phosphate tribasic, L-serine, glycine, L-proline, potassium chloride, tripotassium citrate, L-cystine, L-tryptophan, disodium hydrogen phosphate, high arachidonic acid single cell vegetable oil, magnesium acetate, choline bitartrate, tricalcium phosphate, high docosahexaenoic acid single cell vegetable oil, L-glutamine, sodium chloride, M-inositol, L-ascorbic acid, L-glutamic acid, galactose (from milk), taurine, ferrous sulphate, zinc sulphate, L-carnitine, DL-alpha tocopheryl acetate, calcium D-pantothenate, nicotinamide, antioxidants (E304, E306, E307), manganese sulphate, copper sulphate, thiamin hydrochloride, pyridoxine hydrochloride, riboflavin, vitamin A acetate, potassium iodide, chromium chloride, folic acid, vitamin K₁, sodium selenite, sodium molybdate, D-biotin, vitamin D₃, cyanocobalamin

Vitamins		Per 100g	Per 100ml*
Vitamin A	µg RE	392	58.8
Vitamin D	µg	8.7	1.3
Vitamin E	mg-α-TE	4.6	0.69
Vitamin K	µg	37.2	5.6
Vitamin C	mg	49	7.4
Thiamin	mg	0.5	0.08
Riboflavin	mg	0.5	0.08
Niacin	mg NE	9	1.4
Vitamin B6	mg	0.5	0.08
Vitamin B12	µg	1.2	0.18
Folic Acid	µg	55	8.3
Pantothenic Acid	mg	2.8	0.42
Biotin	µg	18.2	2.7

Trace Elements		Per 100g	Per 100ml*
Iron	mg	8.1	1.2
Zinc	mg	5.7	0.86
Manganese	mg	0.43	0.06
Copper	µg	430	64.5
Iodine	µg	83	12.5
Molybdenum	µg	12	1.8
Selenium	µg	15.5	2.3
Chromium	µg	13.8	2.1

Other		Per 100g	Per 100ml*
Choline	mg	91	13.7
Myo-inositol	mg	98	14.7
Osmolality	mOsmol/kg H ₂ O		380