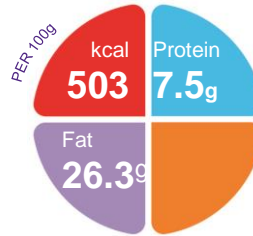


Kindergen

A nutritionally complete unflavoured powdered feed containing whey protein (cows' milk), carbohydrate, fat, vitamins, minerals and trace elements with modified levels of phosphorus and electrolytes.

Features

- 25.1 kcal per 5gr scoop
- Low levels of potassium, chloride, calcium, phosphorus and vitamin A
- Fibre Free
- Unflavoured
- Statement on absence of pork available



Ordering Information

Kindergen	Presentation	Code	Units per carton
Unflavoured	400g tin	707966001	6

Indications

- For the dietary management of chronic renal failure and where peritoneal rapid overnight dialysis (PROD) or continuous cycling peritoneal dialysis (CCPD) is required

Precautions

- Use under strict medical supervision

Contraindications

- Not for intravenous use

Age restrictions

- Suitable as a sole source of nutrition for infants and children

Important Notice

- Due to the low content of potassium, chloride, calcium, phosphorus, and vitamin A in this product which may be required in chronic renal failure, levels should be monitored and individual nutrients supplemented if required

Directions

- The quantity of feed and the dilution should be determined by a clinician or dietitian only, and is dependent on age, bodyweight, and medical condition of the patient.
- Recommended feed concentration is 20%w/v (i.e. 20g of product made up to 100ml with water), providing approximately 1kcal/ml.
- A lower concentration may be required initially until tolerance is achieved.
- Additional water may need to be given to ensure adequate fluid intake, dependent on the individual's clinical condition.
- Always use 4 level scoops of Kindergen for every 84ml of water to yield the recommended feed concentration (20%w/v)

Storage

- Store can in a cool, dry place
- Always replace the container lid after use
- Once can is opened, use within one month

A food for special medical purposes; to be used under strict medical supervision.

Nutricia Southern Africa (PTY) Ltd
199 Bryanston Drive, Bryanston, 2191

For more information call the
Nutricia Customer Care Line 087 350 2310



Kindergen

Nutrition Information		Per 100g	Per 100ml*
Energy	kcal	503	101
	kJ	2104	421
Protein equivalent	g	7.5	1.5
Carbohydrate	g	59.0	11.8
Fat	g	26.3	5.3
Saturates	g	8.6	1.7
Fibre	g	-	-

Minerals		Per 100g	Per 100ml*
Sodium	mg	232	46.4
	mmol	10.2	2.0
Potassium	mg	120	24.0
	mmol	3.1	0.62
Calcium	mg	112	22.4
Phosphorus	mg	93.0	18.6
Magnesium	mg	55	11.0
Chloride	mg	85.0	17.0

Vitamins		Per 100g	Per 100ml*
Vitamin A	µg RE	130	26.0
Vitamin D3	µg	5.4	1.1
Vitamin E	mg-α-TE	2.8	0.56
Vitamin C	µg	52.0	10.4
Vitamin K1	mg	25.4	5.1
Thiamin	mg	0.35	0.07
Riboflavin	mg	0.45	0.09
Niacin	mg NE	4.6	0.92
Vitamin B6	mg	0.45	0.09
Vitamin B12	µg	0.90	0.18
Folic Acid	µg	82.0	16.4
Pantothenic Acid	mg	2.1	0.42
Biotin	µg	23.0	4.6

Trace Elements		Per 100g	Per 100ml*
Iron	mg	4.8	0.96
Zinc	mg	4.2	0.84
Manganese	mg	0.45	0.09
Copper	µg	450	90.0
Iodine	µg	52.0	10.4
Molybdenum	µg	30.5	6.1
Selenium	µg	13.0	2.6
Chromium	µg	12.5	2.5

Other		Per 100g	Per 100ml*
Choline	mg	37.6	7.5
Inositol	mg	21.0	4.2
Osmolality	mOsmol/kg H ₂ O		215
Osmolarity	mOsmol/l		180

Ingredients:

Kindergen: Dried Glucose Syrup, Refined Vegetable Oil (High Oleic Safflower Oil, Non-hydrogenated Coconut Oil, Soya Oil), Whey (cow's milk), Protein Concentrate, Emulsifier (E472c), Trisodium Citrate, Maltodextrin, Magnesium Citrate, L-Leucine, Calcium Phosphate Dibasic, L-Phenylalanine, L-Tyrosine, L-Glutamine, L-Ascorbic Acid, Choline Bitartrate, Potassium Chloride, L-Cystine, L-Histidine, L-Methionine, L-Threonine, L-Valine, Disodium Hydrogen Phosphate, Calcium Chloride, Taurine, Ferrous Sulphate, M-Inositol, Zinc Sulphate, L-Carnitine, Tripotassium Citrate, Nicotinamide, Calcium D-Pantothenate, DL-alpha Tocopheryl Acetate, Manganese Sulphate, Copper Sulphate, Pyridoxine Hydrochloride, Thiamine Hydrochloride, Riboflavin, Vitamin A Acetate, Folic Acid, Potassium Iodide, Sodium Molybdate, Chromium Chloride, Sodium Selenite, Vitamin K1, D-Biotin, Vitamin D3, Cyanocobalamin