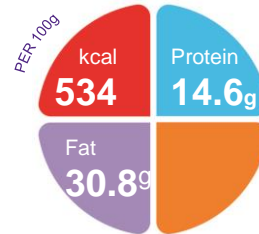


Galactomin 19

A nutritionally complete infant formula containing cow's milk protein, carbohydrate (fructose), fat, vitamins, minerals and trace elements and minimal levels of lactose, galactose and glucose.

Features

- 69 kcal per 100ml
- 1.9g protein equivalent per 100ml
- Minimal levels of lactose, galactose and glucose
- Fibre Free
- Unflavoured



Indications

- For the dietary management of glucose-galactose intolerance either primary or secondary to another disorder

Precautions

- Use under strict medical supervision

Contraindications

- Not for intravenous use

Age restrictions

- Suitable as a sole source of nutrition for infants under 1 year of age
- Can be used as a supplementary feed for older children above 1 year of age

Important Notice

- Incorrect preparation can babies ill

Ordering Information

Galactomin 19	Presentation	Code	Units per carton
Unflavoured	400g tin	718893001	6

Directions for Use

- The quantity of feed and the dilution should be determined by a clinician or dietitian only, and is dependent on age, bodyweight, and medical condition of the patient.
- Recommended Feed Concentration is 12.9%w/v (i.e. 12.9 g of product made up to 100ml with water). A lower concentration may be required initially until tolerance is achieved.
- Each level scoop of (4.3 g) of Galactomin 19 formula requires 30ml (approx. 1fl.oz.) of water to yield the recommended feed concentration of 12.9%
- Carefully follow the directions for preparation and use as stated on the tin

Storage

- Store can in a cool, dry place
- Always replace the container lid after use
- Once can is opened, use within one month

A food for special medical purposes; to be used under strict medical supervision.

Nutricia Southern Africa (PTY) Ltd
199 Bryanston Drive, Bryanston, 2191

For more information call the
Nutricia Customer Care Line 087 350 2310



Galactomin 19

Nutrition Information		Per 100g	Per 100ml	
Energy	kcal	534	69	
	kJ	2233	288	
Protein equivalent	g	14.6	1.9	
Carbohydrate	g	49.7	6.4	
	as sugars	g	49.2	6.3
Fat	g	30.8	4.0	
	as saturates	g	10.8	1.4
	monounsaturates	g	14.8	1.9
	polyunsaturates	g	3.8	0.5
Fibre	g	0	0	

Minerals		Per 100g	Per 100ml
Sodium	mg	158	20.4
	mmol	6.9	0.89
Potassium	mg	467	60.2
	mmol	12	1.5
Calcium	mg	426	55.0
Phosphorus	mg	250	32.3
Magnesium	mg	47.5	6.1
Chloride	mg	316	40.8

Scoop size: 4.3g

Vitamins		Per 100g	Per 100ml
Vitamin A	µg RE	575	74.2
Vitamin D3	µg	9.5	1.2
Vitamin E	mg-α-TE	7.6	0.98
Vitamin K1	µg	41	5.3
Vitamin C	mg	63	8.1
Thiamin	mg	0.32	0.04
Riboflavin	mg	0.8	0.1
Niacin	mg	4.5	0.58
Vitamin B6	mg	0.32	0.04
Vitamin B12	µg	1.6	0.21
Folic Acid	µg	79	10.2
Pantothenic Acid	mg	2.4	0.31
Biotin	µg	11.8	1.5

Trace Elements		Per 100g	Per 100ml
Iron	mg	3.9	0.5
Zinc	mg	3.2	0.41
Manganese	mg	0.44	0.06
Copper	mg	0.38	0.05
Iodine	mg	55	7.1
Molybdenum	µg	18.7	2.4
Selenium	µg	9.2	1.19
Chromium	µg	8.1	1.04

Other		Per 100g	Per 100ml*
Choline	mg	55	7.1
Myo-Inositol	mg	26	3.4
Osmolality	mOsmol/kg H ₂ O		407

Ingredients:

Galactomin 19: Fructose, Refined Vegetable Oil (Palm, Sunflower, Rapeseed, Coconut), Calcium Caseinate (from cows' milk), Sodium Caseinate (from cows' milk), Tripotassium Citrate, Calcium Phosphate Tribasic, Potassium Chloride, Magnesium Citrate, L-Cystine, Choline Bitartrate, Calcium Chloride, L-Ascorbic Acid, Sodium Chloride, Taurine, MInositol, Ferrous Sulphate, L-Carnitine L-Tartrate, Ascorbyl Palmitate, Zinc Sulphate, Nicotinamide, Calcium DPantothenate, DL-alpha Tocopheryl Acetate, DL-alpha Tocopherol, Manganese Sulphate, Copper Sulphate, Riboflavin, Vitamin A Acetate, Thiamine Hydrochloride, Pyridoxine Hydrochloride, Folic Acid, Potassium Iodide, Vitamin K1, Sodium Molybdate, Chromium Chloride, Sodium Selenite, D-Biotin, Vitamin D3, Cyanocobalamin