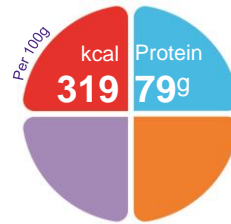


Essential Amino Acid Mix

An unflavoured powdered blend of essential amino acids.

Features

- Concentrated source of essential amino acids (94.5g/100g)
- Osmolality: 360 mOsmol/kg H₂O (at recommended dilution of 1 to 20)
- Milk protein free, gluten free, lactose free, sucrose free, fructose free
- Can be taken as a chilled drink or as a paste



Indications

- Can be used as a supplementary protein source where essential amino acids only are required, rather than whole protein or peptides, such as:
 - Severe malabsorption
 - Allergies
 - Acute liver failure when a liver related inborn error of metabolism is suspected, e.g. Galactosaemia or fatty oxidation defect
- Low protein diets requiring essential amino acid supplementation and in the dietary management of certain urea cycle disorders and arginase deficiency

Precautions

Essential Amino Acid mix is not suitable for the following:

- Sole source of nutrition

Age restrictions

- Can be used in infants, children and adults

Important Notice

- Flavouring not recommended for infants under 6 months of age
- Not for intravenous use

Ordering Information

| Essential Amino Acid Mix | Presentation | Nappi Code | Units per carton |
|--------------------------|--------------|------------|------------------|
| Unflavoured | 200gr | 708781001 | 2 |

Directions for use

- Must only be used under strict medical supervision
- The quantity of Essential Amino Acid Mix is dependant on the age, body weight and medical condition of the patient and must be determined by a Clinician or Dietitian
- The recommended dilution is 1 to 20, i.e. 5 grams of powder plus 100ml of water.
- Mix prescribed amount to a paste with cold water and make up required volume.
- If taken as a paste, water or diluted drinks should be consumed at the same time.
- Once reconstituted, the feed should be refrigerated and must not be kept for longer than 24 hours.
- Stir or shake immediately before use.

Storage

- Store in a cool, dry place
- Always replace the container lid after use
- Once opened use within one month

A food for special medical purposes; to be used under strict medical supervision.

Nutricia Southern Africa (PTY) Ltd
199 Bryanston Drive, Bryanston, 2191

For more information call the
Nutricia Customer Care Line 087 350 2310



Essential Amino Acid Mix

| Nutrition Information | | Per 100g | Per scoop |
|-----------------------|----------------------------|-----------|-----------|
| Energy | kcal | 316 | 15.8 |
| | kJ | 1343 | 67.1 |
| Protein equivalent | g | 79 | 3.95 |
| Total Amino Acids | g | 94.5 | 4.7 |
| Nitrogen | g | 11.8 | 0.59 |
| Carbohydrates | g | Nil added | Nil added |
| Fat | g | Nil added | Nil added |
| Fibre | g | Nil added | Nil added |
| Osmolality | mOsmol/kg H ₂ O | 360 | |

| Minerals | | Per 100g | Per scoop |
|------------|------|----------|-----------|
| Sodium | mg | - | - |
| | mmol | - | - |
| Potassium | mg | - | - |
| | mmol | - | - |
| Calcium | mg | - | - |
| Phosphorus | mg | - | - |
| Magnesium | mg | - | - |
| Chloride | mg | - | - |

| Amino Acid Profile | gr/ 100g Powder |
|--------------------|-----------------|
| L-Alanine | - |
| L-Arginine | - |
| L-Aspartic Acid | - |
| L-Cystine | 3.78 |
| L-Glutamic Acid | - |
| Glycerine | - |
| L-Histidine | 3.78 |
| L-Isoleucine | 10.4 |
| L-Leucine | 16.17 |
| L-Lysine | 13.25 |
| L-Methionine | 3.78 |
| L-Phenylalanine | 5.67 |
| L-Proline | - |
| L-Serine | - |
| L-Threonine | 11.35 |
| L-Tryptophan | 2.36 |
| L-Tyrosine | 9.46 |
| L-Valine | 14.56 |
| L-Carnitine | - |
| Taurine | - |
| L-Glutamine | - |

Scoop size: 5g

Ingredients

Essential Amino Acid Mix:

L-Lysine Acetate, L-Leucine, L-Valine, L-Threonine, L-Isoleucine, L-Tyrosine, L-Phenylalanine, L-Histidine, L-Cystine, L-Methionine, L-Tryptophan

Date of publication: May 2016