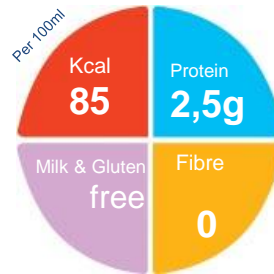


Elemental 028 Extra Powder

A nutritionally complete powder based on amino acids for use in conditions where there is severe impaired GI function during acute inflammation

Features

- 0.85kcal/ml (20% w/v concentration)
- 35% MCT's
- Arginine & Glutamine
- Milk protein free
- 2.5g protein equivalent per 100ml (20% w/v)
- Contains essential and non-essential amino acids, carbohydrate, fat, vitamins, minerals and trace elements
- Individual 100g serve sachets
- Available in Orange flavour



Indications

Elemental 028 Extra Powder is an elemental diet which can provide complete nutritional support or supplementary feeding for the dietary management of conditions where there is severe impairment of the gastrointestinal tract such as:

- Crohn's disease
- Short bowel syndrome
- Intractable malabsorption
- Bowel fistulae
- Radiation enteritis
- Food Allergies
- EE

Precautions

- Must only be used under strict medical supervision
- Not for intravenous use

Contraindications

- Gastrointestinal failure
- Complete intestinal failure
- Major intra-abdominal sepsis

Age restrictions

- Not suitable for use in infants under one year of age
- Not suitable as a sole source of nutrition for children under 5 years of age

Important Notice

- For enteral use only

Ordering Information

Elemental 028 Extra Powder	Nappi Code	Flavour
1 x 100gram	709542002	Orange

Directions for Use

- The quantity of feed should be determined by a clinician or dietitian only and is dependent on the age, bodyweight and medical condition of the patient
- The recommended feed concentration is 20% w/v i.e. 100g powder made up to 500ml with water. A lower concentration may initially be required until recommended concentration is tolerated
- Elemental 028 Extra is best served as a chilled drink.
- Once reconstituted, store in a refrigerator and use within 24 hours

Storage

- Store in a cool, dry place
- Once sachet is opened, store in an airtight container and use within 2-3 days
- Unopened shelf life is 24 months

A food for special medical purposes; to be used under strict medical supervision.

Nutricia Southern Africa (PTY) Ltd
199 Bryanston Drive, Bryanston, 2191

For more information call the
Nutricia Customer Care Line 087 350 2310

 **NUTRICIA**
Advanced Medical Nutrition

Elemental 028 Extra Powder

Nutrition Information		Per 100g	Per 100ml*	
Energy	kcal	427	85	
	kJ	1793	358	
Protein equivalent	g	12.5	2.5	
Carbohydrate	g	55	11	
	Sugars	g	23.3	4.7
as Lactose	g	Nil	Nil	
Fat	g	17.45	3.5	
	Saturates	g	6.7	1.3
	Monounsaturates	g	7.4	1.5
	Polyunsaturates	g	2.4	0.5
% LCT	%		65	
% MCT	%		35	
ω6 / ω3 ratio		4:1		
Fibre	g	nil added	nil added	

Minerals		Per 100g	Per 100ml*
Sodium	mg	305	61
	mmol	13.3	2.7
Potassium	mg	466	93.2
	mmol	11.9	2.4
Calcium	mg	245	49
Phosphorus	mg	200	40
Magnesium	mg	81.6	16.3
Chloride	mg	333	66.6
Ca:P ratio		1.2:1	

*When prepared at recommended concentration 20% w/v (i.e. 100g powder made up to 500ml with water)

Vitamins		Per 100g	Per 100ml*
Vitamin A	μg RE	330	66
Vitamin D	μg	2.5	0.5
Vitamin E	mg α-TE	6.1	1.2
Vitamin K	μg	25	5
Vitamin C	mg	28.3	5.7
Thiamin	mg	0.6	0.12
Riboflavin	mg	0.6	0.12
Niacin	mg	0.336	0.84
Vitamin B6	mg	0.8	0.16
Vitamin B12	μg	1.7	0.34
Folic Acid	μg	83.3	16.7
Pantothenic Acid	mg	2	0.4
Biotin	μg	18	3.6

Trace Elements		Per 100g	Per 100ml*
Iron	mg	4.2	0.84
Zinc	mg	4.2	0.84
Manganese	mg	0.6	0.12
Copper	μg	400	80
Iodine	μg	33.3	6.7
Molybdenum	μg	33.3	6.7
Selenium	μg	15	3
Chromium	μg	15	3

Other		Per 100g	Per 100ml*
Choline	mg	91.6	18.3
Myo-Inositol	mg	9.2	1.8
Osmolality	mOsmol/kg H ₂ O		636
Renal solute load	mOsm/l		235

Ingredients

Elemental 028 Extra Powder Orange: Dried glucose syrup, refined vegetable oil (medium chain triglycerides (palm kernel and/or coconut oil), canola oil, hybrid safflower oil), L-lysine L-aspartate, L-glutamine, L-leucine, L-phenylalanine, L-arginine, trisodium citrate, L-proline, calcium phosphate dibasic, L-valine, glycine, L-isoleucine, L-threonine, N-acetyl L-methionine, L-histidine, emulsifiers (E471, E472e), L-serine, tripotassium citrate, L-alanine, magnesium acetate, potassium chloride, L-tryptophan, choline bitartrate, dipotassium hydrogen phosphate, L-tyrosine, sodium chloride, calcium chloride, L-cystine, taurine, L-ascorbic acid, stabiliser (E405), L-carnitine, ferrous sulphate, zinc sulphate, DL-alpha tocopheryl acetate, M-inositol, nicotinamide, calcium D-pantothenate, manganese sulphate, copper sulphate, pyridoxine hydrochloride, thiamin hydrochloride, riboflavin, vitamin A acetate, folic acid, sodium molybdate, chromium chloride, potassium iodide, sodium selenite, vitamin K₁, D-biotin, vitamin D₃, cyanocobalamin