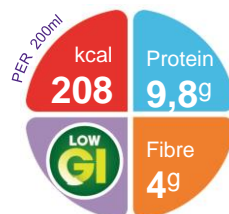


Diasip

A ready-to-drink, nutritionally complete, diabetes specific **low GI** nutritional formula

Features

- 1.0 kcal/ml
- Low glycaemic index (GI) to maintain a slow release of carbohydrate¹; **endorsed by South African GI Foundation**
- High proportion of monounsaturated fatty acids beneficial for lipid profile and glycaemic control²
- Unique carbohydrate mix of isomaltulose and slow release starch to help improve glycaemic control^{3,4}
- Fibre enriched to help improve glycaemic control⁵
- Contains carotenoids
- Gluten Free
- User friendly, easy to hold plastic bottle with straw attached and resealable cap
- Available in Vanilla and Strawberry
- Halaal certified



Indications

For the dietary management of:

- Impaired glucose tolerance
- Diabetes mellitus/Insulin resistance
- Stress induced hyperglycaemia
- Disease related malnutrition
- Patients with high energy and protein requirements

Precautions

Diasip is not suitable for the following:

- Patients with galactosaemia
- Patients with fructosaemia
- Patients requiring a fibre-free diet
- Intravenous use

Age restrictions

- Not suitable for infants and children under 3 years of age.

Important Notice

- Not suitable as a sole source of nutrition for children under 6 years of age

Ordering Information

Diasip	Presentation	Nappi Code	Units per carton
Vanilla	200 ml bottle	710703001	24

Directions for Use

- Shake well before use
- Best served chilled
- Usage to be determined by a healthcare professional

Storage

- Store in a cool, dry place
- Once opened, store in the refrigerator
- Discard unused content after 24 hours

1. Hofman Z et al. Asia Pac J Clin Nutr 2006; 15(3): 412-417
2. Garg A. Am J Clin Nutr 1998; 67 (Suppl): 577S-82S
3. Kawai et al. Horm metabol Res 1989; 21: 338-340
4. Severijnen C et al. Bouritius J Nutr 2007; 137: 2202-7
5. Higgins JA J AOAC Int 2004; 87(3): 761-8

A food for special medical purposes; to be used under strict medical supervision.

Nutricia Southern Africa (PTY) Ltd
199 Bryanston Drive, Bryanston, 2191

For more information call the
Nutricia Customer Care Line **087 350 2310**

NUTRICIA
Advanced Medical Nutrition

Diasip

Nutrition Information		Per 100ml	Per 200ml bottle
Energy	kcal	104	208
	kJ	437	874
Protein	g	4.9 (19% E)	9.8
Whey	g	2.4	4.8
Soy	g	2.4	4.8
Carbohydrate	g	11.7 (47%E)	23.4
Sugars	g	8.3	16.6
as Lactose	g	3.6	7.2
Fat	g	3.8 (34%E)	7.6
Saturates	g	0.5	1.0
Monounsaturates	g	2.2	4.4
Polyunsaturates	g	1.1	2.2
ω6 / ω3 ratio		4:1	4:1
Fibre	g	2 (4%E)	4
Soluble:Insoluble		80:20	80:20
Water	ml	83	166

Minerals		Per 100ml	Per 200ml bottle
Sodium	mg	55	110
	mmol	2.4	4.8
Potassium	mg	100	200
	mmol	2.6	5.2
Calcium	mg	53	106
Phosphorus	mg	47	94
Magnesium	mg	23	46
Chloride	mg	45	90
Ca:P ratio		1.3:1	1.3:1

Ingredients

Diasip Vanilla: Water, isomaltulose, dietary fibres (galacto-oligosaccharides (from **milk**), resistant dextrin, resistant starch, cellulose), vegetable oils (rapeseed oil, sunflower oil), starch (tapioca), lactose (from **milk**), whey protein concentrate (from **milk**), **soy** protein isolate, flavour (vanilla), acidity regulator (citric acid), **fish** oil, potassium citrate, choline chloride, carotenoids (contains **soy**) (β-carotene, lutein, lycopene), magnesium hydroxide, di potassium hydrogen phosphate, potassium hydroxide, sodium L-ascorbate, colour (curcumin), calcium chloride, sodium citrate, tri calcium phosphate, thickener (carrageenan), sweeteners (acesulfame-K, sodium saccharin), ferrous lactate, DL-α-tocopheryl acetate, calcium carbonate, zinc sulphate, nicotinamide, retinyl acetate, copper gluconate, calcium-D-pantothenate, chromium chloride, manganese sulphate, sodium selenite, D-biotin, thiamin hydrochloride, cyanocobalamin, cholecalciferol, pyridoxine hydrochloride, pteroylmonoglutamic acid, riboflavin, sodium molybdate, potassium iodide, sodium fluoride, phytomenadione.

Vitamins		Per 100ml	Per 200ml bottle
Vitamin A	µg-RE	82	164
Vitamin D	µg	1.2	2.4
Vitamin E	mg-α-T.E.	2.5	5.0
Vitamin K	µg	5.3	10.6
Vitamin C	mg	15	30
Thiamin	mg	0.4	0.8
Riboflavin	mg	0.2	0.4
Niacin	mg NE	1.8	3.6
Vitamin B6	mg	0.3	0.6
Vitamin B12	µg	0.65	1.3
Folic Acid	µg	38	76
Pantothenic Acid	mg	0.8	1.6
Biotin	µg	6.5	13

Trace Elements		Per 100ml	Per 200ml bottle
Iron	mg	1.6	3.2
Zinc	mg	1.2	2.4
Manganese	mg	0.35	0.7
Copper	µg	180	360
Iodine	µg	13	26
Molybdenum	µg	10	20
Selenium	µg	7.5	15.0
Chromium	µg	12	24
Fluoride	mg	0.1	0.2



Other		Per 100ml	Per 200ml bottle
Carotenoids	mg	0.2	0.4
Choline	mg	50	100
Osmolality	mOsmol/kg H ₂ O	-	440
Osmolarity	mOsmol/l	-	365
RSL	mOsm/l	-	355