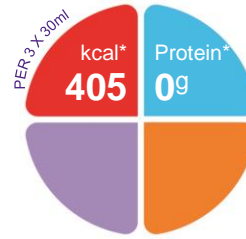


Calogen

A ready-to-drink, energy dense, shot-style oral nutritional supplement. A protein-free, long chain triglyceride fat emulsion.

Features

- 4.5kcal/ml, 135kcal per 30ml shot
- Mixes into food or fluids to increase energy density
- Can be used as a milk replacer in protein restricted diets
- Protein and fibre free
- Available in Strawberry flavour
- User friendly, easy to hold plastic bottle with resealable cap enabling mess-free pouring and dosing
- Halaal certified



Indications

For the dietary management of:

- Disease related malnutrition
- Conditions requiring a high energy intake, with or without fluid and electrolyte restrictions
- Protein restricted diets
- Energy enhancer in tube and sip feeds or to be used as a protein-free milk substitute

Precautions

Calogen is not suitable for the following:

- Patients with galactosaemia
- Intravenous use

Contraindications

- Gastrointestinal failure
- Complete intestinal obstruction
- Major intra-abdominal sepsis

Age restrictions

- Flavoured Calogen (strawberry) not suitable for children under 3 years of age
- May require dilution for children under 5 years of age

Important Notice

- Not suitable as a sole source of nutrition

Ordering Information

Calogen	Presentation	Code	Units per carton
Strawberry	200 ml bottle	709146001	24

Directions for Use

- Shake well before use
- For handy hints contact Nutricia for more information
- Usage to be determined by a healthcare professional
- **Suggested intake:**
3 x 30ml per day

Storage

- Store in a cool, dry place
- Not suitable for freezing
- Once opened, store in the refrigerator
- Discard unused product within 14 days

A food for special medical purposes; to be used under strict medical supervision.

Nutricia Southern Africa (PTY) Ltd
199 Bryanston Drive, Bryanston, 2191

For more information call the
Nutricia Customer Care Line 087 350 2310

 **NUTRICIA**
Advanced Medical Nutrition

Calogen

Nutrition Information		Per 100ml Strawberry	Per 30ml Strawberry*
Energy	kcal	466	140
	kJ	1920	576
Protein	g	0	0
Carbohydrate	g	4.1 (4%E)	1.23
Fat	g	50 (96%E)	15
Saturates	g	5.3	1.6
Monounsaturates	g	30.4	9.1
Polyunsaturates	g	14.3	4.3
% LCT		100	100
$\omega 6 / \omega 3$ ratio		5:1	5:1
Fibre	g	0	0
Water	ml	43	12.9

Typical Fatty Acid Profile	g/100g Fatty Acids
C14:0	0.01
C16:0	5.4
C18:0	3.2
C18:1	59.3
C18:2 ω -6	23.7
C18:3 ω -3	4.75
C18:3 ω -6	0.1
C20:0	0.5
C20:1	1
C22:0	0.5
C22:1	0.2
C24:0	0.2

Minerals		Per 100ml	Per 30ml*
Sodium	mg	7	2.1
	mmol	0.3	0.09
Chloride	mg	0.1	0.03
	mmol	0.003	<0.001

Other		Per 100ml Strawberry
Osmolality	mOsmol/kg H ₂ O	360

*Suggested Intake: 3 x 30ml

Ingredients

Calogen Strawberry: Vegetable oils (rapeseed oil, sunflower oil), demineralised water, sugar, emulsifier (citric acid esters of mono and diglycerides of fatty acids), flavour (strawberry), colour (E120)